

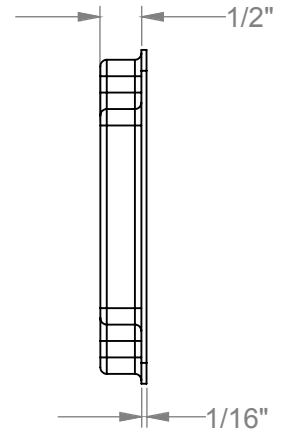
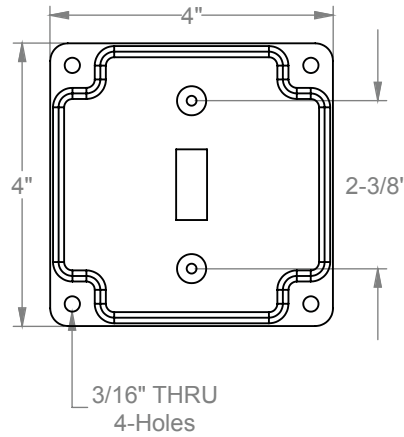
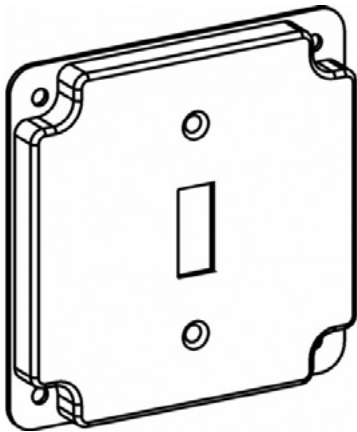
CONTRACTOR	
PROJECT	DATE
PREPARED BY	MODEL : CM-4401

## SERIES SPECIFICATIONS

Centaur's 4" Square Industrial covers, raised 1/2" are used to protect wires inside the box for switches, receptacles and outlets. They are constructed from 16 gauge galvanized steel. Centaur offers various cover designs for most applications. Selected models feature crushed corners. All Centaur industrial covers are UL and RoHS listed.



## LINE DRAWING



## CONSTRUCTION

Material  
Galvanized Steel

Make  
Raised

Color  
Galvanized

Volume  
7 Cu. In.

Width  
4"

Height  
4"

Plate Type  
Toggle Switch W/ Crushed  
Corners

## CERTIFICATIONS

Listing  
UL Listed

Fire Rating  
Acceptable for use in 2-hour fire rated walls.

APPLICATION AND PERFORMANCE SPECIFICATION INFORMATION IS SUBJECT TO CHANGE WITHOUT NOTIFICATION

CONTRACTOR	
PROJECT	DATE
PREPARED BY	MODEL : CM-4401

## ORDERING INFORMATION

Part Number: CM-4401

Case Dimensions (in.): ???

Case Quantity: 50 PCS

Item Weight (lbs.): ???

Case Weight (lbs.): 18

## UPC BARCODES

	GTIN-12	GTIN-14	IMS Code
CM-4401	190010380251	00190010380251	0262-7409



APPLICATION AND PERFORMANCE SPECIFICATION INFORMATION IS SUBJECT TO CHANGE WITHOUT NOTIFICATION